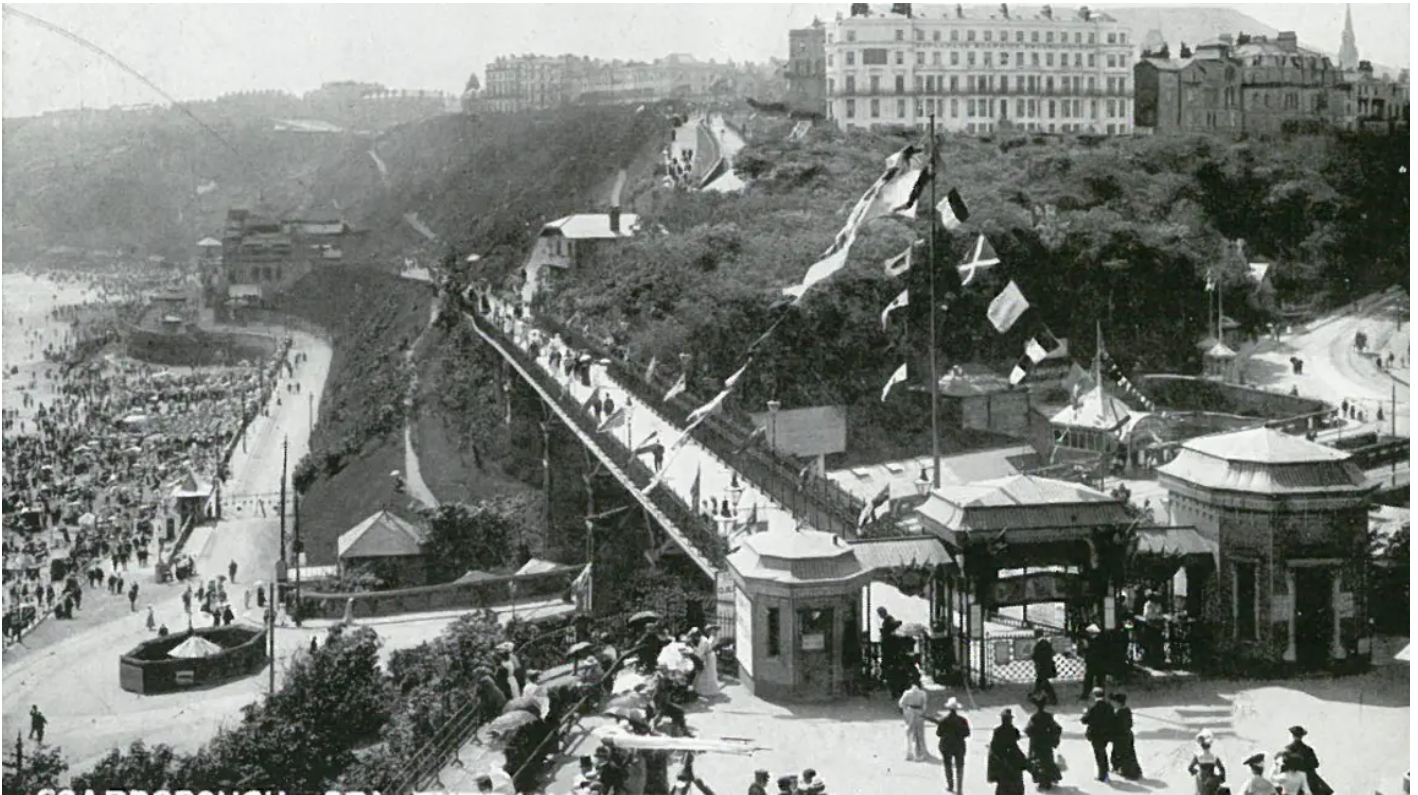


Parks investment to boost coastal tourism

09/01/2017



South Cliff Gardens, Scarborough Scarborough Borough Council
National Lottery cash to revitalise 13 parks across the UK including coastal communities.

Our grand Victorian and Edwardian seaside resorts have endured a bit of a rough ride over the past 50 years or so. Once the destination for the nation's summer holidays, they've been in decline in recent decades as many of us have been lured to holiday in warmer climates.

However, they're becoming popular once again with many choosing a 'staycation' or daytrip to the seaside. Public parks sit at the heart of many of these towns and play a major part in the area's tourism offer.

So, today we've announced more than £33million National Lottery investment to restore and revitalise 13 public parks across the UK including five situated in coastal communities.

When complete, these projects will not only provide improved green spaces for local people to enjoy but will also help attract more tourism, supporting local economies.

The coastal parks receiving grants are:

- Great Yarmouth's Venetian Waterways
- South Cliff Gardens in Scarborough

- Ellington Park in Ramsgate
- Mount Garden in Fleetwood, Lancashire
- Stanmer Park in Brighton

The money has been awarded through Parks for People, a joint programme supported by HLF and Big Lottery Fund. The programme uses money raised through sales of National Lottery tickets to support the regeneration, conservation and increased enjoyment of public parks and cemeteries.



ddordeb hefyd mewn ...

[Great Yarmouth's Venetian Waterways opened in 1928 Great Yarmouth Borough Council](#)

[**UK coastal towns set for economic boost as National Lottery invests £33m in public parks**](#)